

Innovative Engineering for the Energy Industry

TRW Conekt is an engineering consultancy and test services business that provides a range of design and support services to enable leading companies in the energy industry to develop high quality, high reliability electronic products and systems.

By applying the knowledge and expertise that it has gained in the aerospace, automotive, defence and oil & gas sectors, Conekt is able to maximise the capabilities of its clients to create industry-leading products.

Our Capabilities

Conekt's experienced engineering teams work closely with our clients to define project requirements, taking account of the skills and knowledge of both partners, whether for a part of or the entire product development pipeline.

By combining the skills of our specialist engineers with our in-house UKAS accredited test facility, Conekt is uniquely positioned to offer a range of engineering support from concept design and development through to prototyping and validation testing.

Our service offerings are built around our core competencies and capabilities that include:

- Systems Engineering
- Safety Analysis and Management
- Control Engineering
- Electronic Hardware
- Software
- Electric Drives and Magnetics
- Mechanical Engineering
- Materials Analysis
- Sensing Technology & Data Fusion



Our Services

Conekt offers its clients a wide range of support services that can be tailored to particular project needs. Our range of services include:

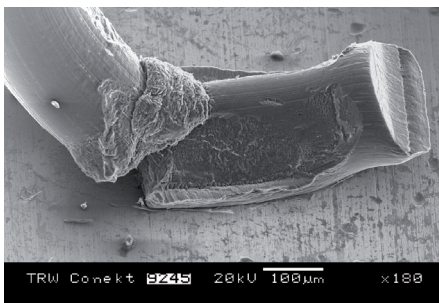
- Design audit
- Design for manufacture
- Product development
- Safety management and analysis
- Supplier assessment
- Test and validation
- Failure investigation
- Reliability prediction

Key benefits of working with Conekt

By working with Conekt our clients benefit from:

- Access to expertise necessary to complete projects, thereby allowing affordable access to essential capability and capacity.
- Overcoming barriers and constraints (technical/legal/environmental)
- Reduction in development costs by applying advanced technologies
- Acceleration of design and development programmes
- Support for the realisation of superior products
- Reduction in technical uncertainties before product launch
- Resolution of in-service problems and improvement of existing designs
- Creation of options to develop new products
- Multi-sector technology application experience

For more information about Conekt's services and capabilities, please contact us on +44 (0)121 627 4242 or via conekt-enquiries@trw.com



conekt
powered by **TRW**

TRW Conekt
Technical Centre
Stratford Road
Solihull B90 4GW
United Kingdom

Tel: +44 (0) 121 627 4242
Fax: +44 (0) 121 627 4243
conekt-enquiries@trw.com
www.conekt.co.uk